



NEW

New College Communities Impact Report 2022



NEW COLLEGE



NEW COLLEGE
POSTGRADUATE VILLAGE



UNSW
SYDNEY

The Best In University Living

Mission

We cultivate outstanding university campus communities of academic excellence and pastoral care, shaped by Christian faith and values, where every student can flourish.





Message from the Board Chair

I am always inspired by New College people and grateful for the benefits of being part of such a remarkable community at a formative time in my life. No matter what squiggly paths our lives have taken since leaving College, we share having begun that pathway in company with strangers gathered from around the world who became close friends, many for a lifetime. I'm honoured to now be working with the Board and Master to take New College forward.

Today, competition for students is intensifying from brand new purpose-built student accommodation nearby. Yet the ethos of Christian care and witness which lies at the heart of the 'New way' sets our communities apart as safe, welcoming and vibrant places in which to live and excel. On the following pages you'll meet others whose lives were helped on a path to success by New College.

As the pandemic recedes into history, we have much for which to be thankful to God. New College finished the year with the communities refilled, our finances restoring, and brimming with fresh enthusiasm for the year ahead!

The Board has focussed on financial recovery and pursuing deliberate engagement with our alumni and friends to strengthen these critical relationships. Looking to the future we are confident that our strategy, built on solid foundations and proven outcomes, will inspire new levels of support to impact the young people we serve as we explore how to extend the blessings of these Colleges to many others.

I thank my Board colleagues for their commitment and voluntary service over the year. I also warmly acknowledge our staff who work tirelessly to make College a 'home away from home' for all residents and our faithful supporters who encourage us with their generosity.

Mrs Janet Simpson
BSW, JP, MAICD
New College Alumna
(1979-82)





Message from the Master

My sincere thanks to all those parents, alumni and friends who have supported us as we've grappled to care for our students through the most challenging period in our colleges' 53 year history. Your financial generosity has particularly been crucial in providing assistance and support to students in special need during these difficult times.

Despite all the complexities of COVID, your continued loyalty enabled our university campus communities to remain strong in caring for every student. As we've journeyed through the academic year, I've witnessed amazing kindness and dedicated care for residents' wellbeing, relationships and safety through our unique pastoral care model framed by Christian ideas.

Our Deans of Residents have distinctive roles in guiding and augmenting the resident communities. I've been delighted by Jonathan Billingham's leadership in reframing and focusing the New College academic tutoring team to better advance the aspirations of our students. Similarly, Edwina Hine's appointment at New College Postgraduate Village has developed the identity and participation of residents within the postgraduate community.

New College continues its national reputation as a leading undergraduate college known for its supportive community, its rich

cultural diversity, and excellent academic achievements. New College Postgraduate Village has expanded its research seminar program to become the foremost multi-disciplinary academic community at UNSW. From my UNSW adjunct academic role, it is exciting to witness both the intellectual ingenuity and cross-fertilisation of ideas that occurs across our communities. I hope you are proud to share in the successes and ongoing progress of your New College! I'd love to hear your feedback about this first impact report and how we can improve future editions.

We have exciting plans to further enhance the New College Communities which I look forward to sharing soon. I know that with your backing, future students will benefit from our exceptional holistic residential care and go on confident to serve our nation and world.

**Adjunct Professor
William L. Peirson**





2022 Summary in Numbers



429

A total of new residents joined our communities in 2022

126

A total of postgraduate residents (Masters + PhD) in 2022

3

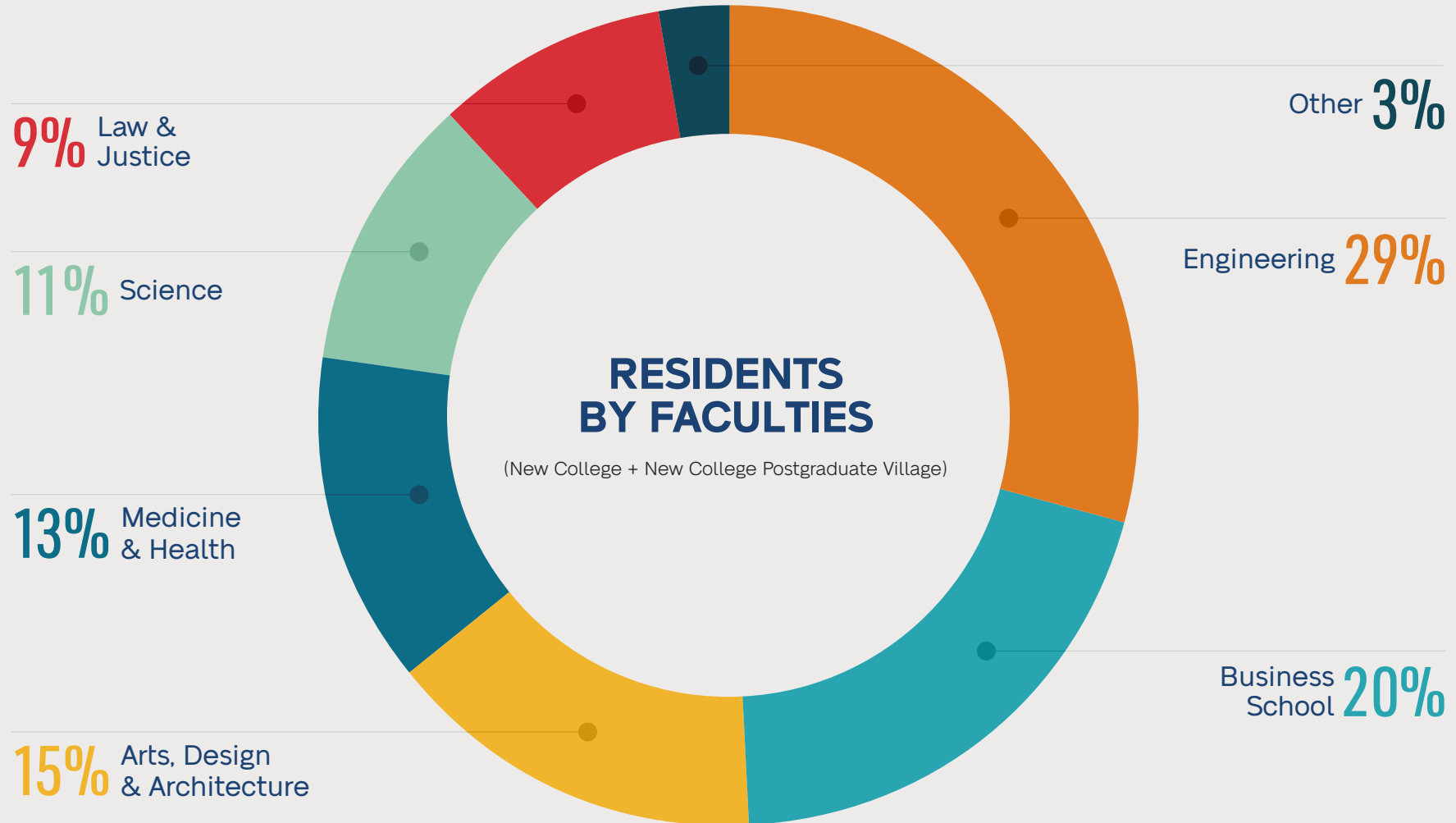
Number of University Medals in 2022

42

A total of residents we have supported with scholarships in 2022



2022 Summary in Numbers

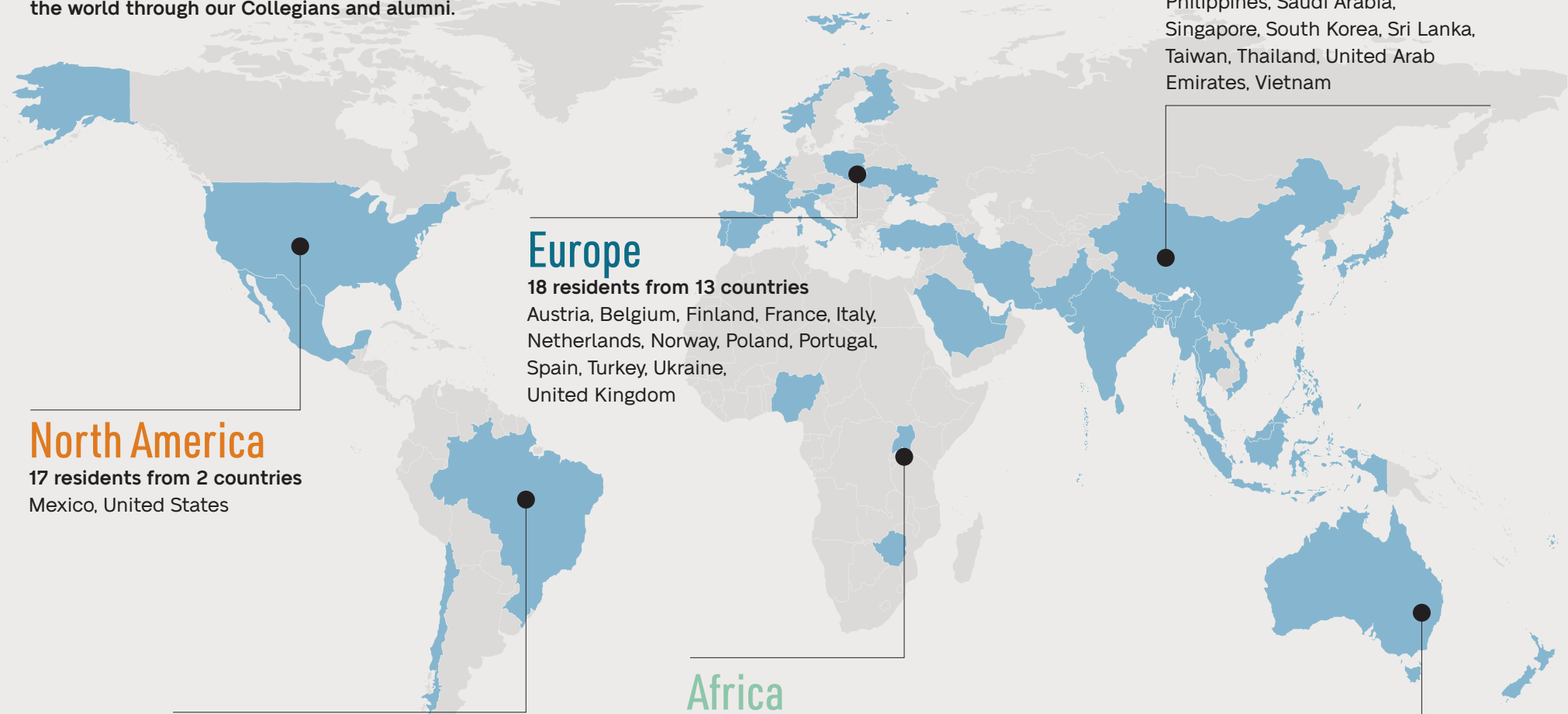


The New College Communities are committed to supporting and encouraging academic excellence and the highest academic standards at the University of New South Wales.



RESIDENTS IN 2022 JOINED OUR COMMUNITIES FROM 42 COUNTRIES

As the world moves toward a global community, New College continues to evolve, expanding our reach and influence around the world through our Collegians and alumni.



North America

17 residents from 2 countries
Mexico, United States

South America

2 residents from 2 countries
Brazil, Chile

Europe

18 residents from 13 countries
Austria, Belgium, Finland, France, Italy,
Netherlands, Norway, Poland, Portugal,
Spain, Turkey, Ukraine,
United Kingdom

Africa

4 residents from 3 countries
Nigeria, Uganda, Zimbabwe

Asia

350 residents from 19 countries
Bangladesh, China, Hong Kong,
India, Indonesia, Iran, Japan,
Malaysia, Myanmar, Pakistan,
Philippines, Saudi Arabia,
Singapore, South Korea, Sri Lanka,
Taiwan, Thailand, United Arab
Emirates, Vietnam

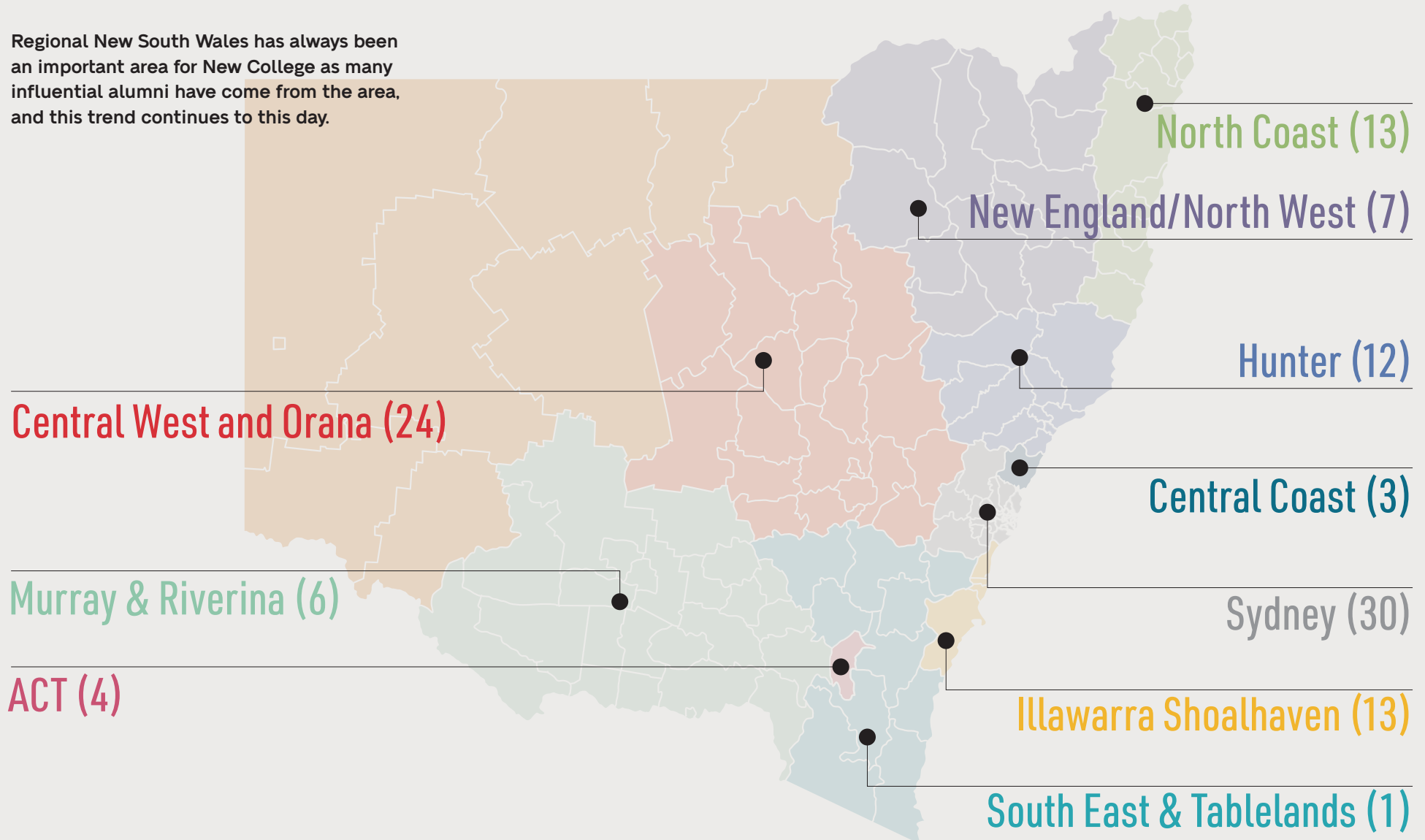
Oceania

182 residents from 3 countries
Australia, New Zealand, Samoa



RESIDENTS IN 2022 JOINED OUR COMMUNITIES FROM NSW AND ACT

Regional New South Wales has always been an important area for New College as many influential alumni have come from the area, and this trend continues to this day.





2022 Year in Review: Alumni Achievement

David Lockart and Daniel Rankmore “General Practice of the Year 2022”

From fresh New Collegians who met at O’Week, to directors of an award winning practice. Dr. David Lockart (NC 2003-05) and Dr. Daniel Rankmore (NC 2003-05) have come a long way.

Their practice, Barton Lane, was awarded “General Practice of the Year 2022” at the Royal Australian College of General Practitioners (RACGP) National Awards.

The historic practice located in Tamworth NSW has become an industry leader through hard work and innovation. Directors Dr. David Lockart and Dr. Daniel Rankmore were excited and humbled at the recognition.

“New College was a cornerstone of my young adult life. It was a place of support and camaraderie where I was able to try new things and get involved in university life. The friends I made there remain some of the most trusted and encouraging friends I have.” David



David (left) and Daniel (right) in New College O’Week 2003.



David (left) and Daniel (right) with Dr Nicole Higgins, President of the RACGP (centre) on the day they received the award.

“Being recognised by industry provided validation that we were on the right path and providing a good service to the community.” Daniel




2022 Year in Review – Academic Achievement



3 University Medals



34 UNSW Academic Prizes



6 New College Academic Prizes

Olivia Brown	Jeffrey Hui
Clare Ghows	Jacob Karp
Emily Holford	Jeremy Traini



4 New College Postgraduate Village Academic Prizes

Yelyzaveta Andrych
Shree Baskar
Chandler Corrigan
Aida Payab



“ A lot of my closest friends to this day are people I met at New College, and in fact the people I celebrated with the day I received the scholarship were all from my first year group. ” Rosie

Dr Rosie Kirk (NC 2015-16)

awarded 2022 Rhodes Scholarship to study Doctor of Philosophy in Medical Sciences at The University of Oxford.



2022 Year in Review – Christian Leadership Impact

“One of the great joys of my job is that I get to meet missionaries all over the world and meet the local Christians they are working alongside. Seeing the way people are responding to the gospel in very different contexts is always encouraging, especially when their choice of living for Jesus is a costly decision.” Peter



50+

There are over 50 New College Alumni currently serving in full-time Christian ministry.

The Reverend Peter Sholl (NC 1988-90),
International Director for CMS Australia (CMS-A)
and his wife **Sarah (NC 1989-91)**





2022 Year in Review – Formal Dinners

We welcomed inspiring guests to provoke our young people to confront issues that will be significant for their future leadership roles.

	Date	Speaker
Commencement	16 February	Deputy Vice Chancellor, Planning and Assurance, and the Anthony Mason Professor of Law, Scientia Professor George Williams AO
Lent	16 March	Dr. Wah Guan Lim , Lecturer in Chinese Studies at UNSW, and Fellow at New College Postgraduate Village
Easter	13 April	Prof. Julian Trollor , neuropsychiatrist, heads the Department of Developmental Disability Neuropsychiatry (3DN) within the Discipline of Psychiatry and Mental Health at UNSW
Pentecost	1 June	Ms Suzanne Cotter , Director of the Museum of Contemporary Art Australia (MCA)
Scientia	3 August	Prof Attila Brungs , Vice-Chancellor and President of UNSW
Foundation	4 September	Pastor Rev. Dr. Ray Minniecon , the Honorary Indigenous Pastor of Scarred Tree Indigenous Ministries with St John's Anglican Church Glebe





2022 Year in Review – Facilities & Team Development



LED lighting

Both New College and New College Postgraduate Village buildings were entirely upgraded to LED lighting, which should have the triple effect of reducing energy use, reducing maintenance, and improving internal illumination.



Fully Air Conditioned

We air conditioned all student rooms at New College and New College Postgraduate Village. The trimester system at UNSW now has students studying for their finals in December, and air conditioning their rooms is part of making our college building fit for purpose.



Advancement Team

Mr Ward Lucas joined our team as Advancement Manager. We also welcomed Mr Nick Walker as Public Relations Officer.



Catering Changes

The catering team members are no longer subcontractors but official New College staff from 2022.

Our staff teams include catering, maintenance, cleaning, and administration. They are a key reason we are able to remain high performing and highly sought after residential colleges.





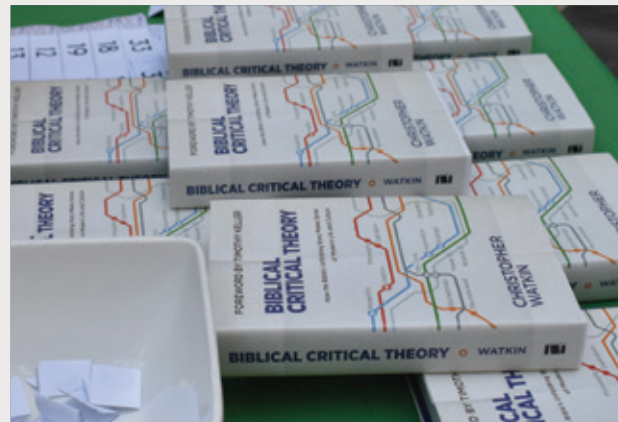
2022 Year in Review – Flagship Activities



New College Lecture 'Finding Yourself' on 6th October 2022 at New College



Christopher Watkin's book launch 'Biblical Critical Theory' on 21st November 2022 at New College Postgraduate Village



Thank you for your support

We would like to say Thank You to all our alumni, parents and friends of the New College Communities, who gave generously last year toward our scholarship programs, appeal, academic programs and Foundation. Please know that every contribution, no matter the size, is making a difference in the lives of our students and helping the New College Communities continue to provide academic excellence, along with outstanding social integration and pastoral care. Your generosity has made university life accessible to many students, for whom this was previously out of reach.

“ Receiving a scholarship eased the financial burden and allowed me to participate wholeheartedly in College activities. ” Rachael

Make a life changing tax deductible donation today





Master Adjunct Professor William L. Peirson
Advancement Manager Ward Lucas
Editor, *NEW* Misako Morita
Design Joy Lankshear

Email alumni@newcollege.unsw.edu.au
Web newcollege.unsw.edu.au

© Copyright for *NEW*
is held by New College

Cover photo: Isaac Learson in *The Tamworth Trail*,
the 2022 New College Revue.